



RHEEBOK VILLAGE ESTATE



CONTENT

1. Site Development Plan

2. Phase 3 Layout Plan

3. Available Stands:

- **Phase 1: Sold out**
- **Phase 2: 18 Stands, priced at between R550 000.00 and R850 000.00**
- **Phase 3: 125 Stands, priced at between R600 000.00 and R3 000 000.00**

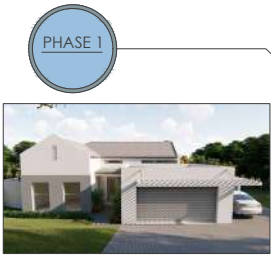
4. Standard House Layout Plans





TYPICAL ELEVATION

PHASE 2



TYPICAL ELEVATION

PHASE 1



TYPICAL ELEVATION

CLUSTER VILLAGE 1



EAST GUARD HOUSE

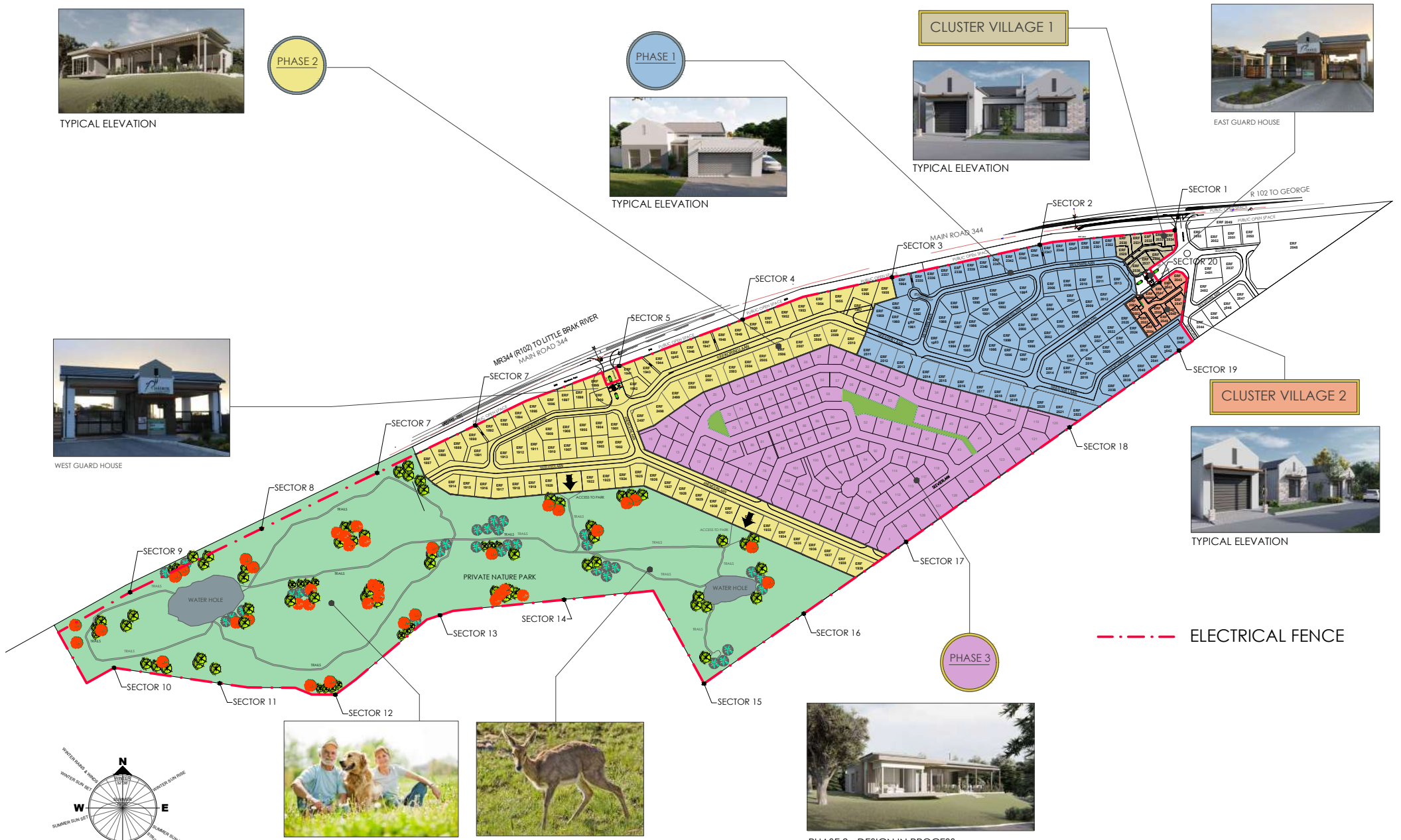


WEST GUARD HOUSE

CLUSTER VILLAGE 2



TYPICAL ELEVATION



--- ELECTRICAL FENCE

PHASE 3



PHASE 3 - DESIGN IN PROCESS



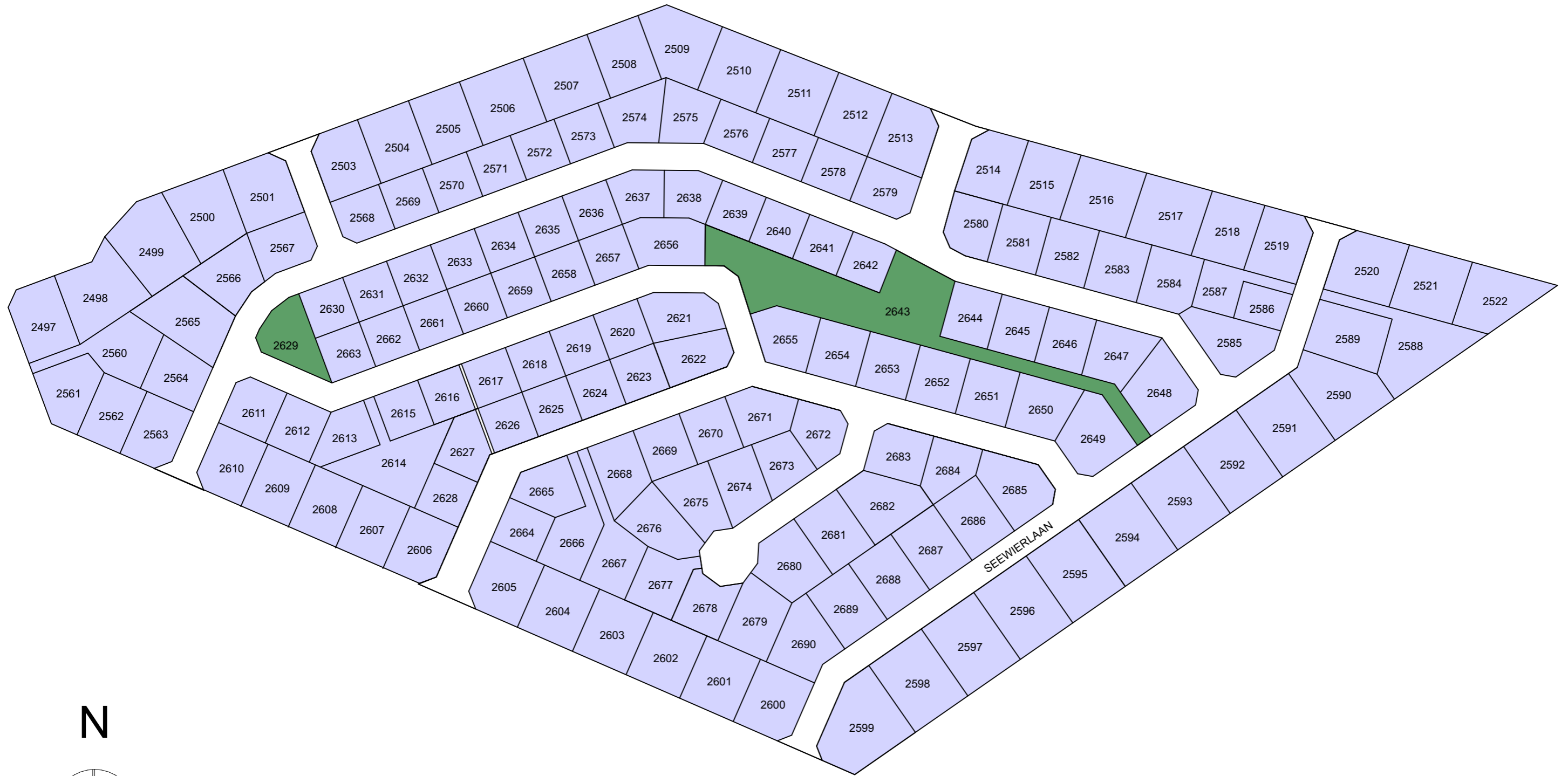
PRIVATE NATURE PARK
Open parks
Trails
Water holes



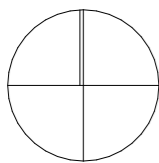
SITE DEVELOPMENT PLAN - PHASING



HEEBOK VILLAGE ESTATE
SECURE COASTAL COUNTRY LIVING



N



RHEEBOK VILLAGE ESTATE PHASE 3

SCALE 1:1500

Date: Wednesday, 15 November 2023
 Scale: --
 DrawingNo: --
 RevisionNo: --



HAMILTON WESSELS ARCHITECTS (PTY)LTD
 88 Montagu Street, Mossel Bay.
 Western Cape | South Africa | 0040
 PO Box 260 | Mossel Bay



TYPE 1A



TYPE 1A - FLOOR PLAN

AREA CALCULATIONS:

GARAGE	21.50m ²
GROUND FLOOR	71.50m ²
OPEN STOEP	7.50m ²
TOTAL HOUSE AND GARAGE SIZE	93.00m²



TYPE 1B



TYPE 1B - FLOOR PLAN

AREA CALCULATIONS:

GARAGE	21.50m ²
GROUND FLOOR	71.50m ²
OPEN PORCH	3.50m ²
TOTAL HOUSE AND GARAGE SIZE	93.00m²



TYPE 7B



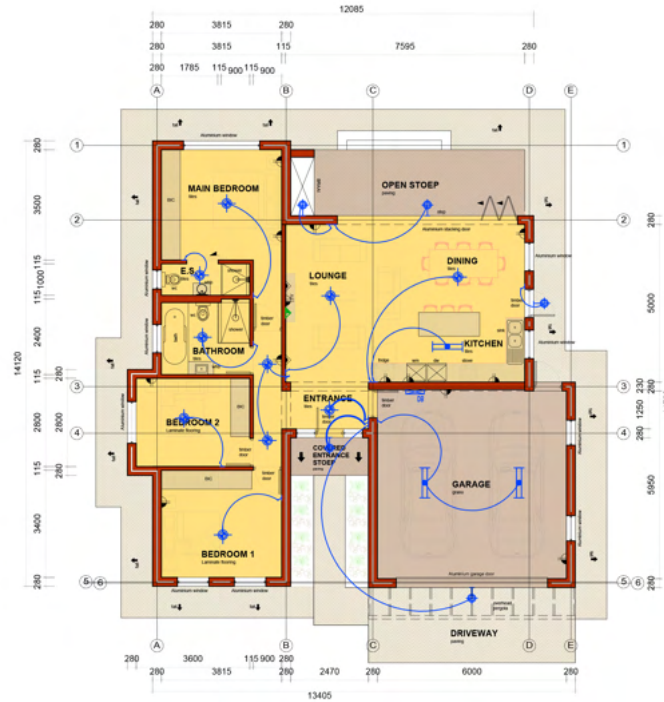
TYPE 7B - FLOOR PLAN

AREA CALCULATIONS:

GARAGE	40.50m ²
GROUND FLOOR	142.50m ²
COVERED STOEP	8.70m ²

TOTAL HOUSE AND GARAGE	183.00m ²
GRAND TOTAL EXTEND	191.70m ²

TYPE 9B



TYPE 9B - FLOOR PLAN

AREA CALCULATIONS:

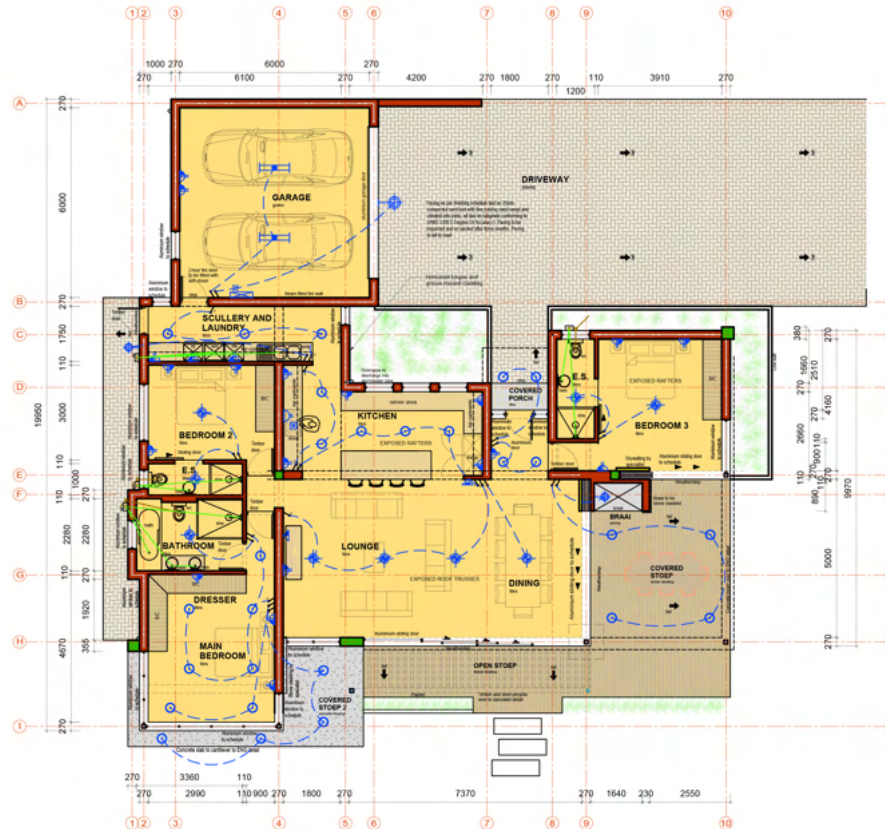
GARAGE	41.50m ²
GROUND FLOOR	110.50m ²
OPEN STOEP	15.50m ²
COVERED ENTRANCE PORCH	3.00m ²
TOTAL HOUSE AND GARAGE	152.00m ²
GRAND TOTAL EXTEND	170.50m ²

TYPE 2A



TYPE 2A - FLOOR PLAN

TYPE 2B



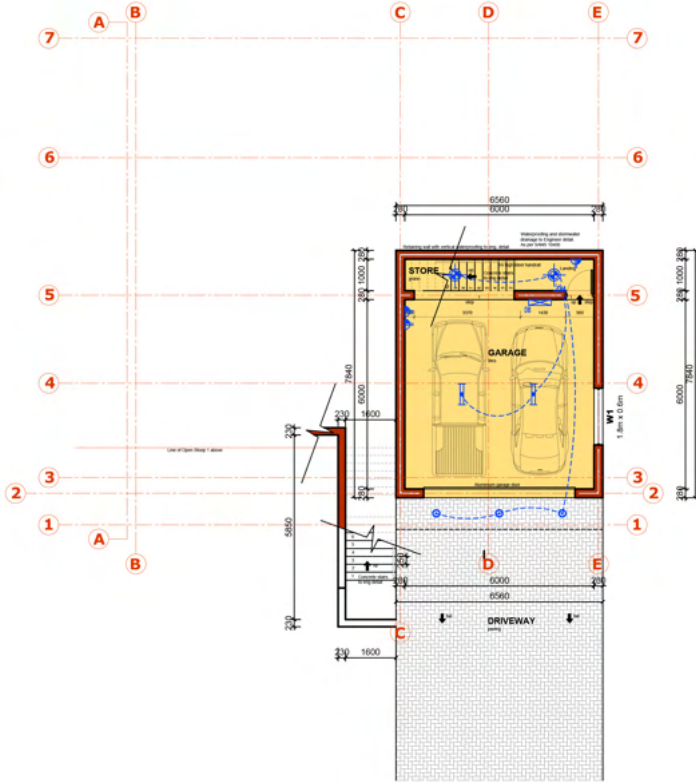
TYPE 2B - FLOOR PLAN

AREA CALCULATIONS:

GARAGE	42.00m ²
GROUND FLOOR	170.00m ²
COVERED STOEP	23.50m ²
COVERED ENTRANCE PORCH	1.50m ²

TOTAL HOUSE AND GARAGE	212.00m ²
GRAND TOTAL EXTEND	237.00m ²

TYPE 2C



TYPE 2C - FLOOR PLAN

AREA CALCULATIONS:

GROUND FLOOR - GARAGE	51.50m ²
FIRST FLOOR	171.50m ²
COVERED STOEP	17.50m ²
COVERED BALCONY	10.00m ²

TOTAL HOUSE AND GARAGE	223.00m ²
GRAND TOTAL EXTEND	250.50m ²

TYPE 2C



TYPE 2C - FLOOR PLAN

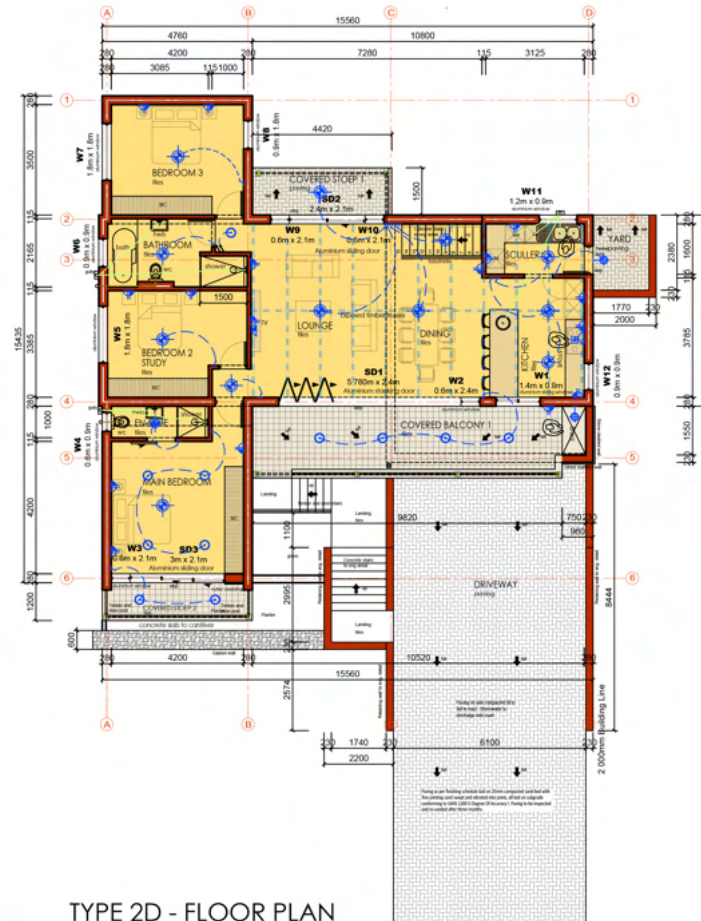
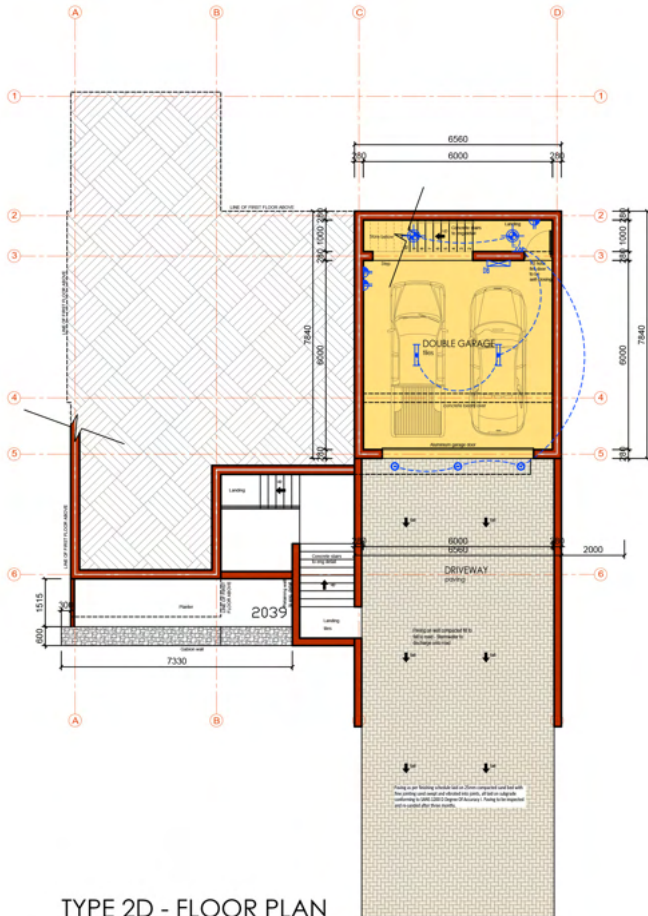
AREA CALCULATIONS:

GROUND FLOOR - GARAGE	51.50m ²
FIRST FLOOR	171.50m ²
COVERED STOEP	17.50m ²
COVERED BALCONY	10.00m ²

TOTAL HOUSE AND GARAGE	223.00m ²
GRAND TOTAL EXTEND	250.50m ²

TYPE 2D

TYPE 2D



TYPE 2D - FLOOR PLAN

TYPE 2D - FLOOR PLAN

AREA CALCULATIONS:

GROUND FLOOR - GARAGE	51.50m ²
FIRST FLOOR	136.00m ²
COVERED BALCONY 1	22.50m ²
COVERED STOEP 1	6.60m ²
COVERED STOEP 2	7.20m ²

AREA CALCULATIONS:

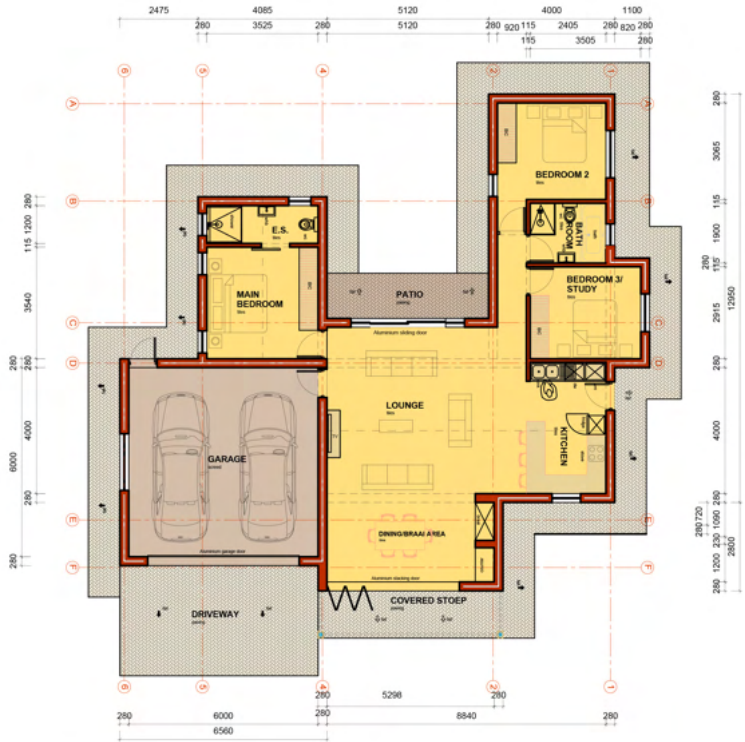
GROUND FLOOR - GARAGE	51.50m ²
FIRST FLOOR	136.00m ²
COVERED BALCONY 1	22.50m ²
COVERED STOEP 1	6.60m ²
COVERED STOEP 2	7.20m ²

TOTAL HOUSE AND GARAGE	187.50m ²
GRAND TOTAL EXTEND	223.80m ²

TOTAL HOUSE AND GARAGE	187.50m ²
GRAND TOTAL EXTEND	223.80m ²



TYPE 2E



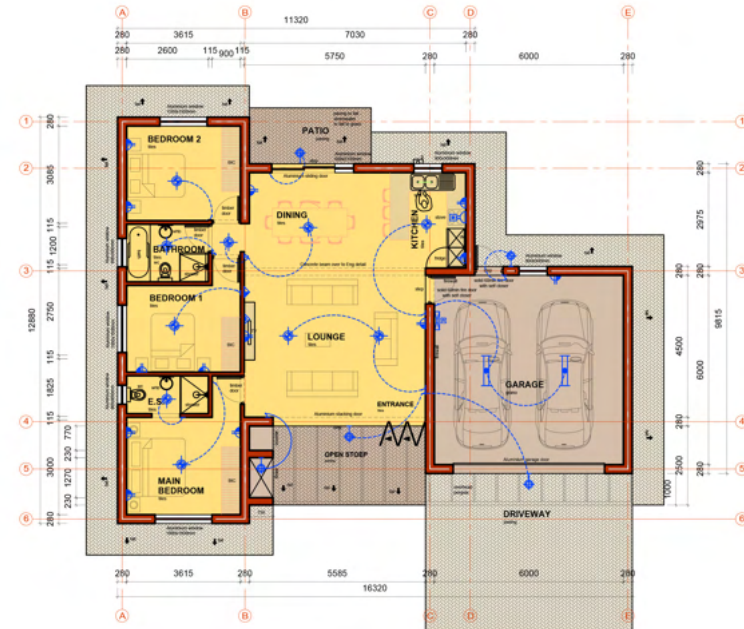
TYPE 2E - FLOOR PLAN

AREA CALCULATIONS:

GARAGE	41.50m ²
GROUND FLOOR	124.00m ²
COVERED STOEP	8.70m ²

TOTAL HOUSE AND GARAGE	165.50m ²
GRAND TOTAL EXTEND	174.20m ²

TYPE 2F



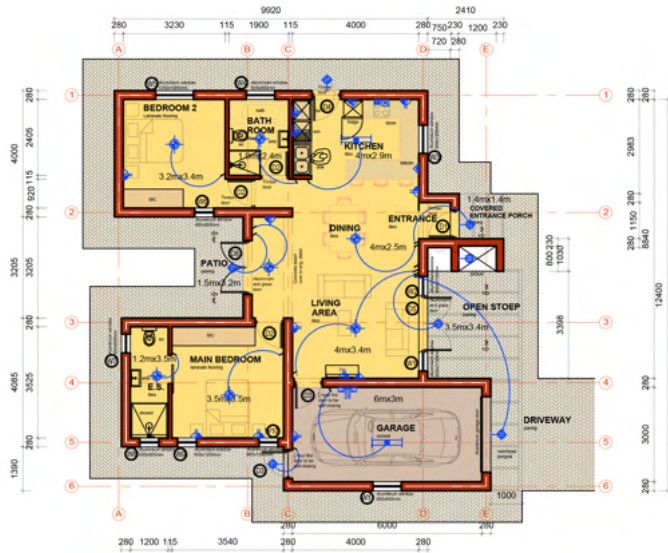
TYPE 2F - FLOOR PLAN

AREA CALCULATIONS:

GARAGE	42.10m ²
GROUND FLOOR	106.00m ²
OPEN STOEP	14.00m ²
PATIO	6.86m ²

TOTAL HOUSE AND GARAGE	148.10m ²
GRAND TOTAL EXTEND	168.96m ²

TYPE 8A-1



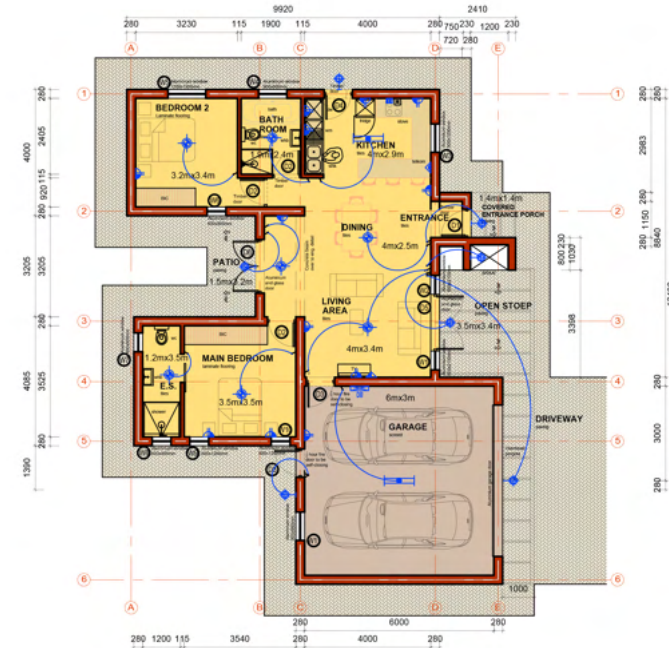
TYPE 8A-1 - FLOOR PLAN

AREA CALCULATIONS:

GARAGE	22.40m ²
GROUND FLOOR	90.70m ²
COVERED ENTRANCE PORCH	4.20m ²
OPEN STOEP	14.50m ²
PATIO	5.00m ²

TOTAL HOUSE AND GARAGE	113.10m ²
GRAND TOTAL EXTEND	117.30m ²

TYPE 8A-2



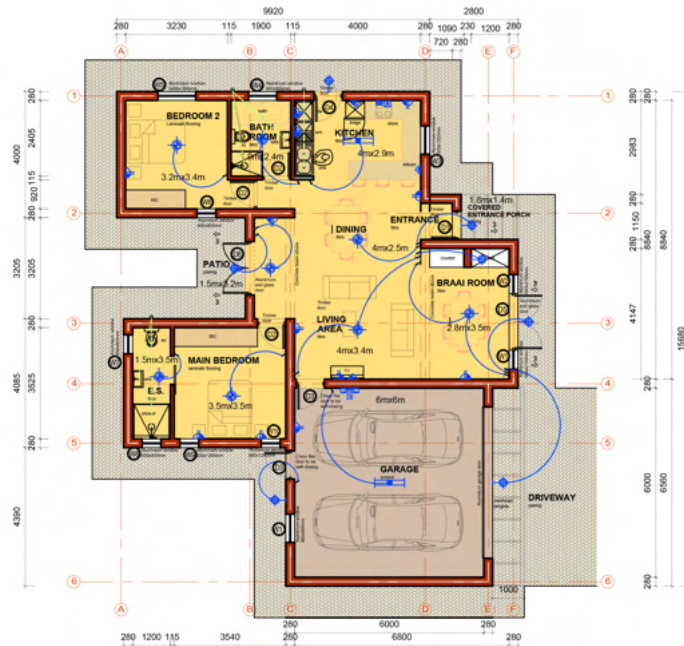
TYPE 8A-2 - FLOOR PLAN

AREA CALCULATIONS:

GARAGE	42.10m ²
GROUND FLOOR	90.70m ²
COVERED ENTRANCE PORCH	4.20m ²
OPEN STOEP	14.50m ²
PATIO	5.00m ²

TOTAL HOUSE AND GARAGE	132.80m ²
GRAND TOTAL EXTEND	137.00m ²

TYPE 8A-3



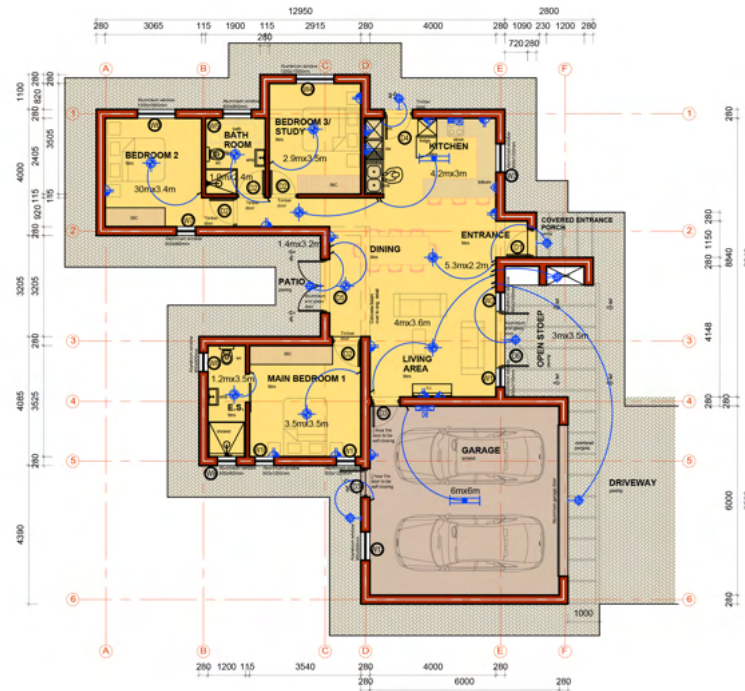
TYPE 8A-3 - FLOOR PLAN

AREA CALCULATIONS:

GARAGE	41.80m ²
GROUND FLOOR	103.00m ²
COVERED ENTRANCE PORCH	2.50m ²
PATIO	5.00m ²

TOTAL HOUSE AND GARAGE	144.80m ²
GRAND TOTAL EXTEND	147.30m ²

TYPE 8B



TYPE 8B - FLOOR PLAN

AREA CALCULATIONS:

GARAGE	42.10m ²
GROUND FLOOR	106.50m ²
COVERED ENTRANCE PORCH	2.50m ²
OPEN STOEP	12.40m ²
PATIO	5.00m ²
TOTAL HOUSE AND GARAGE	148.60m ²
GRAND TOTAL EXTEND	151.10m ²